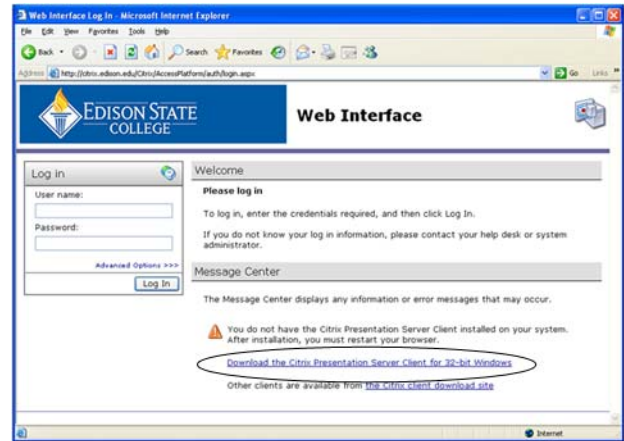


Citrix Client Installation

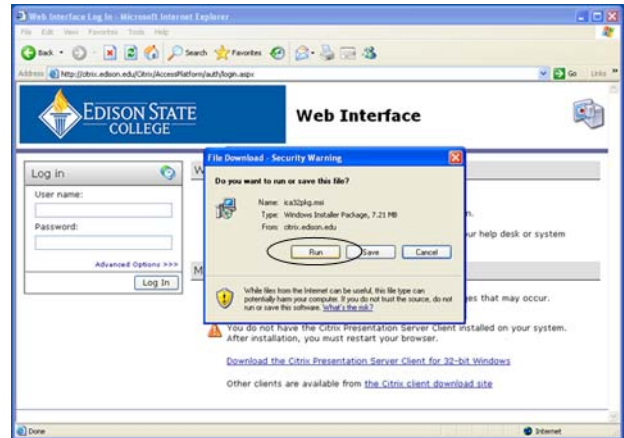
Open a web browser (Internet Explorer or Firefox) and go to <http://citrix.edison.edu>

Click on the link

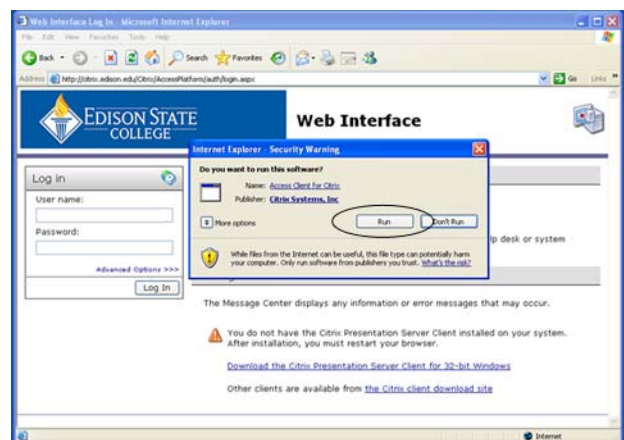
Download the Citrix Presentation Server Client for 32-bit Windows



Click on **Run**

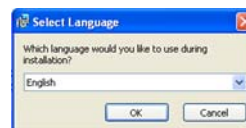


Click on **Run**



Select **English**

Click on **OK**

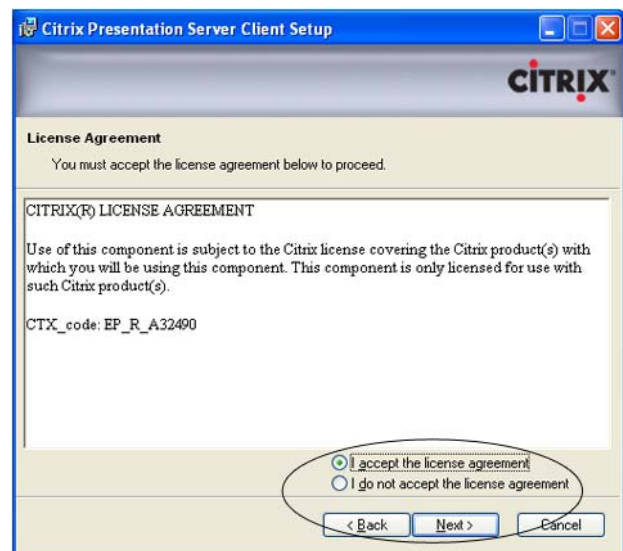


Click on **Next**



Select **I accept to license agreement**

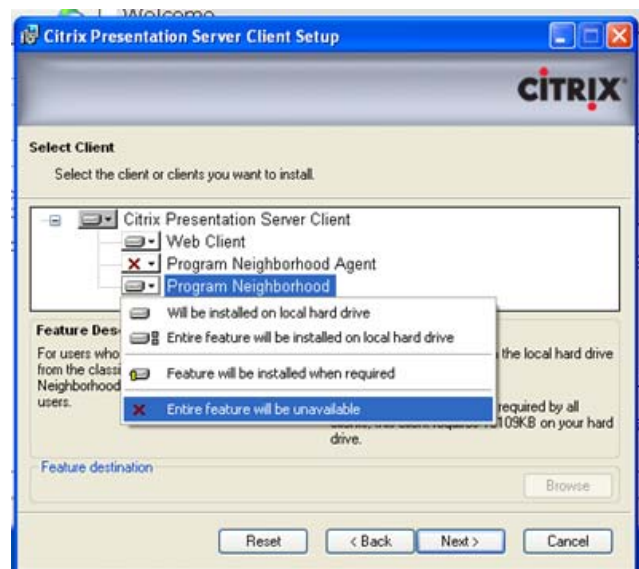
Click on **Next**



Click on the **down arrow** next to **Program Neighborhood Agent** and choose **Entire feature will be unavailable**

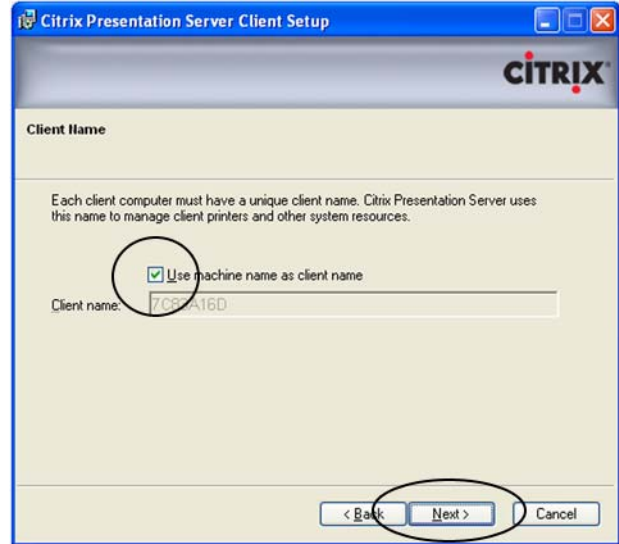
then click on the **down arrow** next to **Program Neighborhood** and choose **Entire feature will be unavailable**

Note:
only the Web Client should be installed



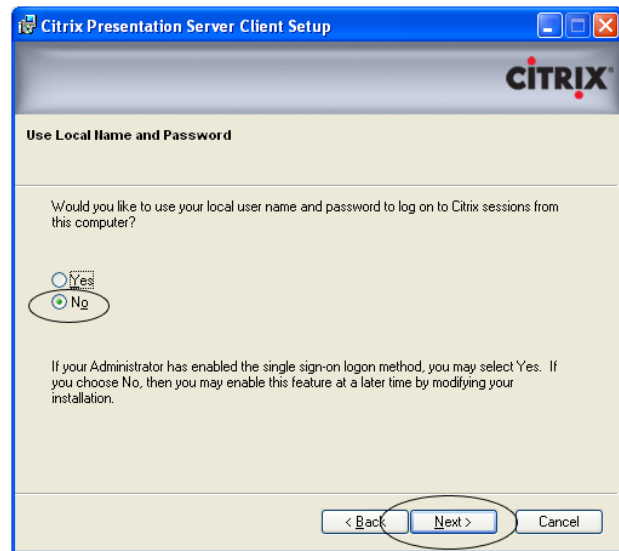
Select **Use machine name as client name**

Click on **Next**



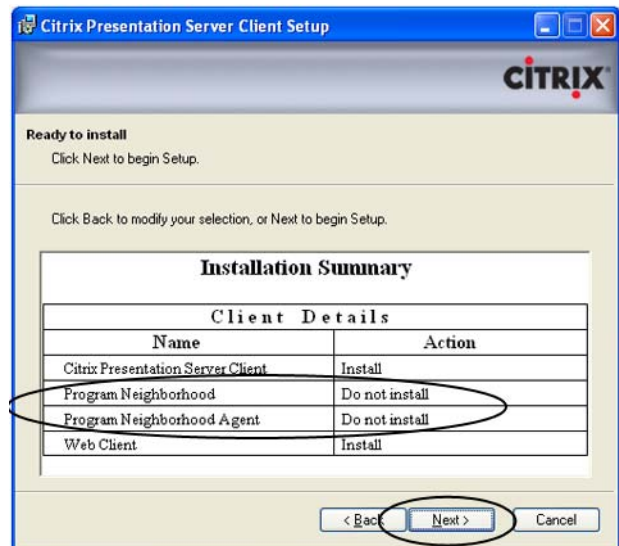
Select **No**

Click on **Next**



Double-check that
Program Neighborhood and
Program Neighborhood Agent
will **not** be installed

Then Click on **Next**



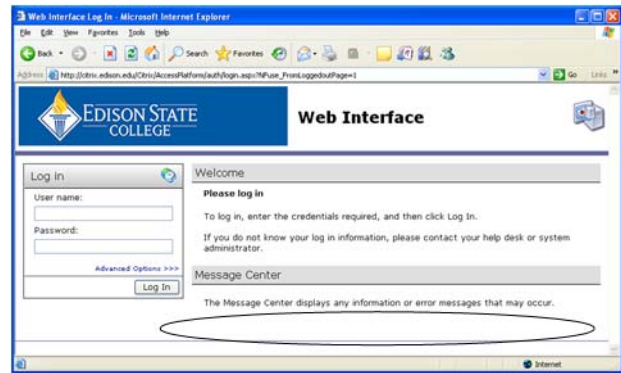
Click on **Finish**



Close the browser window and then reopen it.

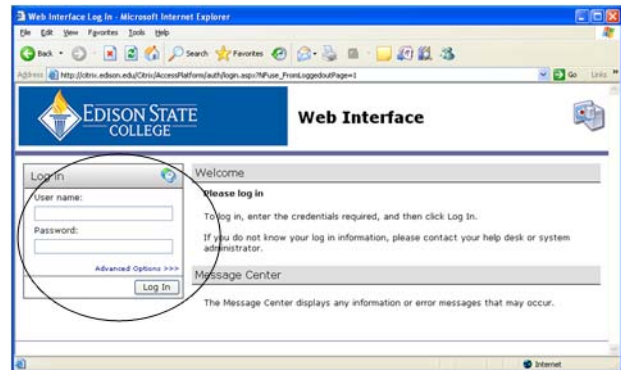
Check that the link
Download the Citrix Presentation Server Client for
32-bit Windows

Does **not** appear on the page

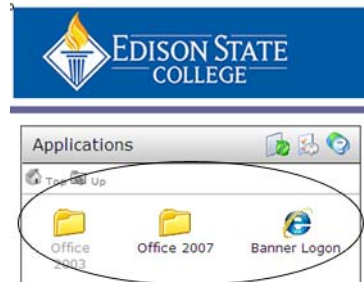


Log in

Use your **Windows username and password**
(the username and password that you use to log into
your office computer)

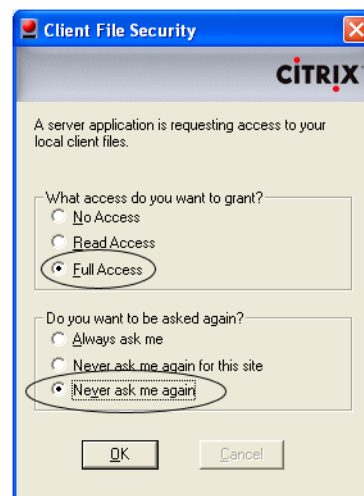


Click on **one** of your Application icons



Choose

Full Access
and
Never ask me again



Done!